

SHARPER IMAGE®

20-SETTING BEARD AND STUBBLE TRIMMER

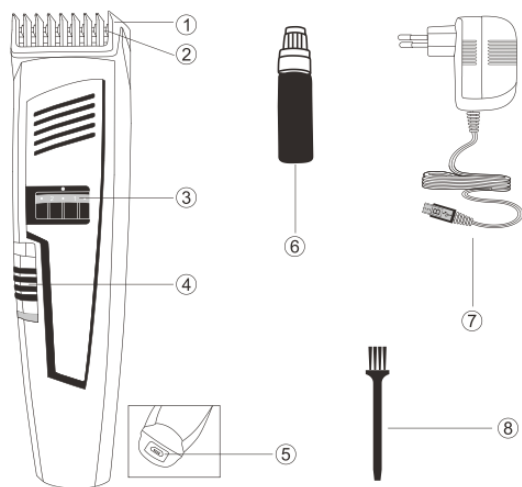
Item No. 205954

User Guide



Thank you for purchasing the Sharper Image 20-Setting Beard and Stubble Trimmer. Please read this User's Guide carefully and keep it for future reference.

FEATURES



- | | |
|--|------------------------------|
| 1. Trimming Comb | 5. Socket for appliance plug |
| 2. Cutting Unit | 6. Blade oil |
| 3. Precision zoom look adjustment ring | 7. Adapter |
| 4. ON/OFF switch | 8. Cleaning brush |

IMPORTANT SAFETY INSTRUCTIONS

When using an electrical appliance, basic safety precautions should always be followed, including the following. Read all instructions before using this appliance.

To reduce the risk of electric shock:

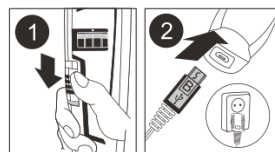
1. Keep away from water.
2. Do not reach for a plugged in Trimmer that has fallen into water. Unplug immediately.
3. The Trimmer is for dry use only. Do not use while bathing or in a shower.
4. Do not place or store Trimmer where it can fall or be pulled into a tub or sink.
5. Always unplug this Trimmer from the electrical outlet immediately after [re] charging.
6. Unplug and remove power supply cord from Trimmer before cleaning.

TO CHARGE/ RECHARGE

Fully charge Trimmer before using for the first time or after non-use for a long period of time.

Charging, recharging or using the Trimmer in temperatures below 4°C [40° F] or higher than 35°C [95° F] adversely affects lifespan of the battery.

- If the Trimmer is subjected to a major change in temperature, pressure or humidity, let the trimmer acclimatize for 30 minutes before using.
 - Continuously recharging Trimmer will reduce lifespan of battery.
1. Be certain Trimmer is OFF [Fig.1].
 2. Connect appliance plug directly into the Trimmer [Fig.2] and plug adapter into any 220-240 V AC outlet. **Note: Use only the included adapter plug provided.**
 3. The charging light on the adapter lights up RED to indicate the Trimmer is charging. After fully charging, the charging light will remain lit. It will take approximately 10 hours to fully charge the Trimmer for a cordless trimming time of up to 45 minutes.
 4. Disconnect the cord and unplug from electrical outlet.



OPTIMIZE THE WORKING LIFE OF THE BATTERY

- After the Trimmer has been charged for the first time, do not recharge the Trimmer between trimming sessions. Continue using it until the battery is completely empty.
- Do not charge for more than 24 hours.
- Do not keep cord permanently plugged in.
- Discharge / run down the battery completely twice a year by letting the motor run until it stops.
- If the Trimmer hasn't been used for a long period of time, it must be recharged for a full 10 hours.

CORDLESS TRIMMING

1. Unplug Trimmer from outlet and remove cord.
2. Slide ON/OFF switch ON to begin trimming.
3. When finished, turn Trimmer OFF.

TRIMMING

- Use this Trimmer for its intended household use as described in this manual.
- Always comb the beard and/or moustache with a fine comb before you start trimming.
- If you are trimming for the first time, be careful. Do not move the Trimmer too fast. Make smooth and gentle movements.

TRIMMING WITH YOUR BEARD

Trimming Comb [Note: Beard Trimming Comb must be on Trimmer to use the Zoom Lock.]

1. Turn the Zoom Lock to the desired trimming length setting [See table]. The setting is indicated in the center of the adjustment ring [Fig. 3]. If you are trimming for the first time, start by using the comb at the maximum trimming length setting [#10] to prevent accidentally trimming hairs too short. As you become familiar with the settings, adjust Zoom Lock to desired trimming length. Zoom Lock will “click” into position at each setting.
2. Switch the Trimmer ON.
3. To trim in the most effective way, move the Trimmer against the direction of hair growth. Make sure the surface of the comb always stays in contact with the skin [Fig. 4].
4. If cut hairs have accumulated in the comb turn Trimmer off, remove the comb and shake the hair out of comb [Fig. 5]. The selected trimming length setting will not change when you do this.

Trimming without the Beard Trimming comb

1. Be certain the Trimmer is in the OFF position.

Trimming for ‘Stubble’ Look

5. Be certain Beard Trimmer Comb is on Trimmer and use setting 1 (3/64in/1mm) to result in a ‘stubble’ look [Fig. 6].

Trimming without the Beard Trimming comb

Remove comb if you are:

- Defining hair lines
 - Trimming nape of neck
 - Removing single, unwanted hairs
2. Remove the Beard Trimming Comb by pulling it off the Trimmer [fig.7]
 3. Switch the Trimmer ON.
 4. Make well-controlled movements. Touch the hair/skin lightly with the Trimmer [fig.8].

Setting	Hair length after trimming
-	0.5 mm
1	1 mm
-	1.5 mm
2	2 mm
-	2.5 mm
3	3 mm
-	3.5 mm
4	4 mm
-	4.5 mm
5	5 mm
-	5.5 mm
6	6 mm
-	6.5 mm
7	7 mm
-	7.5 mm
8	8 mm
-	8.5 mm
9	9 mm
-	9.5 mm
10	10 mm



CLEANING

- Clean the Trimmer after each use.
- Always switch Trimmer OFF, unplug and remove power supply cord from Trimmer before cleaning.
- Never immerse the Trimmer in water or rinse under the tap [Fig.9].
- Do not use abrasive cleaning agents, scourers or aggressive liquids such as alcohol, gasoline, or acetone to clean the Trimmer and attachments.
- Never clean, replace or remove Trimmer comb with motor ON.
- Do not apply pressure to cutters.
- Do not touch cutters with hard objects as this may damage them.
- Use a soft, dry cloth to clean Trimmer handle.



After Each Use:

1. Make sure the Trimmer is switched OFF and disconnected from the electrical outlet.
2. Remove the Trimming Comb and clean with the brush.
3. Remove the cutting unit by pushing against the teeth of the cutting unit [Fig. 10] and rinse under warm tap water [Fig. 11] or use the brush supplied.

Allow to air dry thoroughly.

4. Place the cutting unit back by inserting the notch of the cutting unit into the guiding slot [Fig. 12].
5. Push the cutting unit back into place on the Trimmer until you hear a click [Fig. 13].

Replacing the Cutting Unit

1. If your cutters become damaged or worn, do not continue using the Trimmer. Replace cutters immediately.
2. Open the cutting unit.

3. Remove the old cutting unit by pushing against the teeth of the cutting unit [Fig. 10].
4. Insert the notch of the new cutting unit into the guiding slot [Fig. 12].
5. Push the cutting unit back onto the Trimmer until you hear a 'click' [Fig. 13].

STORAGE

- Be sure trimmer is turned OFF. Remove cord from outlet and trimmer before storing in a safe, dry location where it will not be crushed, banged, or subject to damage.
- Do not wrap cord around Trimmer when storing.
- Store cord in a safe location where it will not be cut or damaged.

SPECIFICATIONS

Power Source:	AC 100-240V 50/60Hz
Motor Voltage:	DC 2.4V
Charging Time:	10 hours
Battery Capacity:	Ni-MH AAA 600mAh X 2

WARNING

To reduce the risk of burns, fire, electric shock or injury to persons:

To reduce the risk of electric shock:

1. Close supervision is necessary when this appliance is used by, on, or near children.
2. Use this Trimmer for its intended household use as described in this manual. Do not use attachments not recommended by the manufacturer.
3. Never operate this Trimmer if it has a damaged cord or plug, if it is not working properly, if it has been dropped, damaged, or dropped into water.
4. Keep the Trimmer, cord and any attachments away from heated surfaces.
5. Never drop or insert any object into any opening.

6. Do not operate, charge, clean or plug in Trimmer outdoors or where aerosol (spray) products are being used or where oxygen is being administered.
7. Always check cutters, cutting unit and comb before using the Trimmer. Do not use the Trimmer if cutters, cutting unit and comb are damaged, as injury may occur.
8. Always attach plug to Trimmer first, then to outlet. To disconnect, turn on/off switch to "OFF" position, then remove plug from outlet.
9. To prevent possible damage to the cord, do not wrap the cord around the Trimmer.
10. Never put Trimmer in direct sunlight or store at a temperature above 60° C (140° F).
11. Never immerse the Trimmer in water or rinse under the tap.
12. This Trimmer is for use on human hair only. Do not use this Trimmer for any other purpose.
13. Always store your Trimmer, attachments and power plug in a moisture-free area. Make sure the cord is disconnected from the Trimmer.
14. Only use the power plug and other accessories supplied with the appliance.
15. This appliance can be used by children aged from 8 years and above and persons with reduced physical, sensory or mental capabilities or lack of experience and knowledge if they have been given supervision or instruction concerning the use of the appliance in a safe way. Children shall not play with the appliance. Cleaning and user maintenance shall not be made by children without supervision.

IMPORTANT

The power plug contains a transformer. Do not cut off the power plug to replace it.

Do not dispose of electrical appliances as unsorted municipal waste, use separate collection facilities. Contact your local government for information regarding the collection systems available. If electrical appliances are disposed of in landfills or dumps, hazardous substances can leak into the groundwater and get into the food chain, damaging your health and well-being. When replacing old appliances with new ones, the retailer is legally obligated to take back your old appliance for disposals at least free of charge.

WARRANTY / CUSTOMER SERVICE

Sharper Image branded items purchased from SharperImage.com include a 1-year limited replacement warranty. If you have any questions not covered in this guide, please call our Customer Service department at 1 (877) 210-3449. Customer Service agents are available Monday through Friday, 9:00 a.m. to 6:00 p.m. ET.

SHARPER IMAGE®

The SHARPER IMAGE® name and logo are registered trademarks.

©Sharper Image. All Rights Reserved.